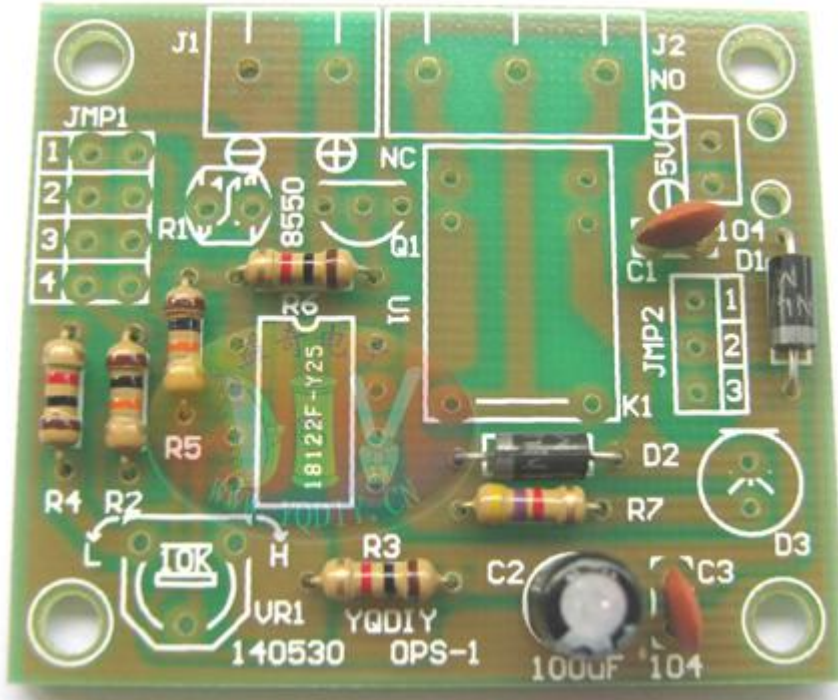
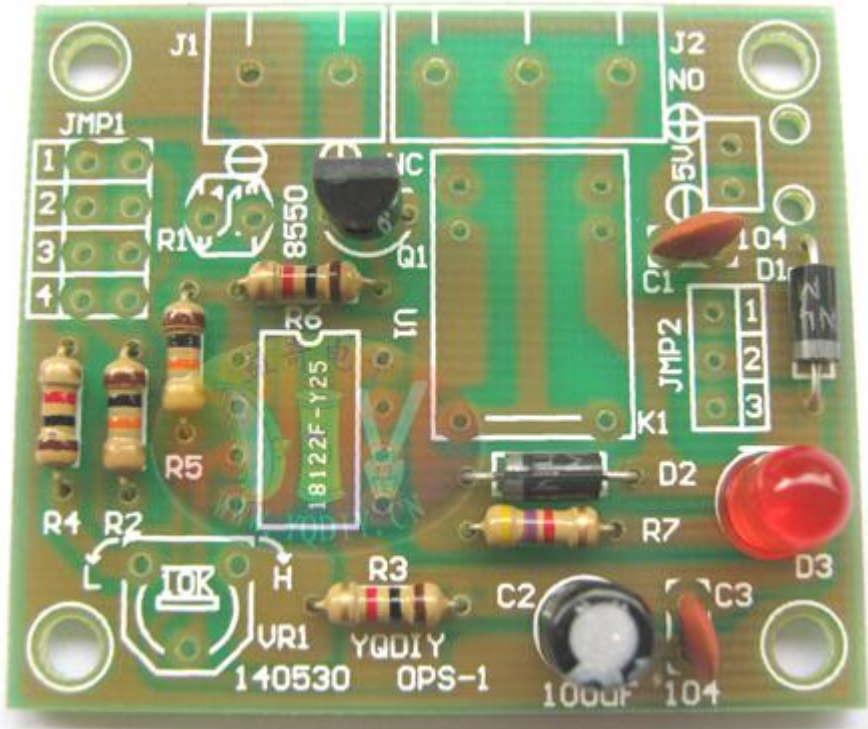


**4. Soldering an electrolytic capacitor and two ceramic capacitors (electrolytic capacitors has the direction).**

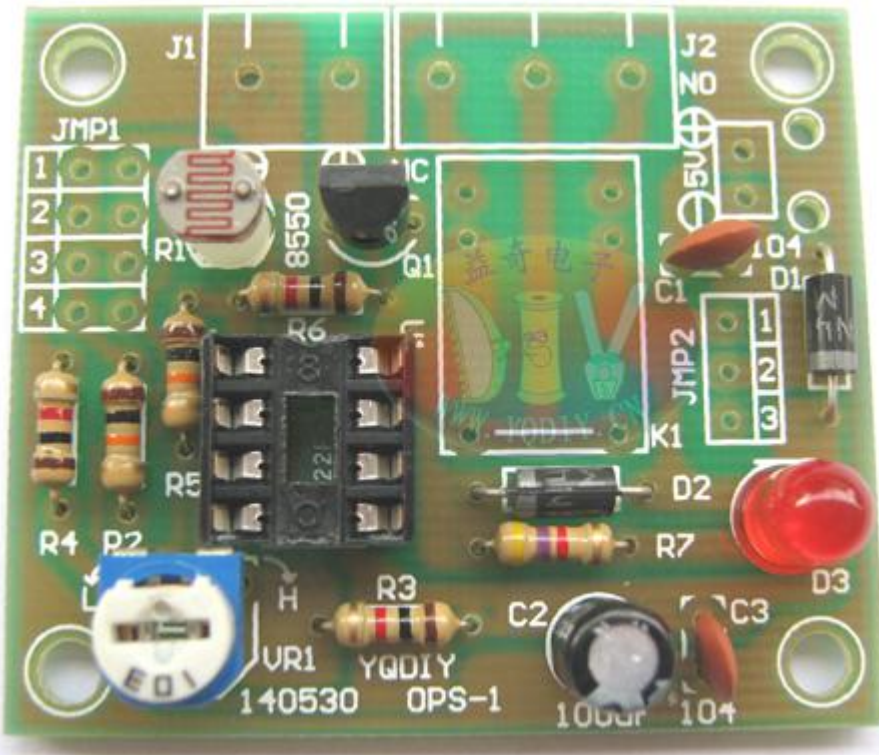


**5. Soldering a LED and a transistor (LED and triode has a direction).**





**6. Soldering photosensitive resistance, IC Block and potentiometer.**

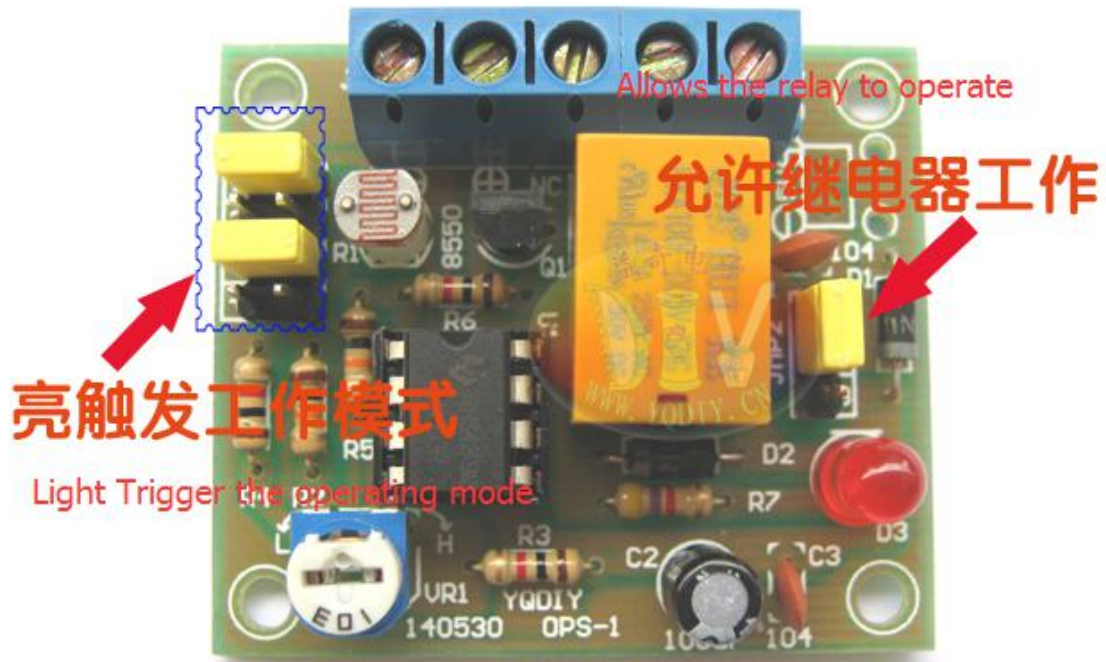


**7. Soldering two terminals and two row pins (two terminals have direction).**

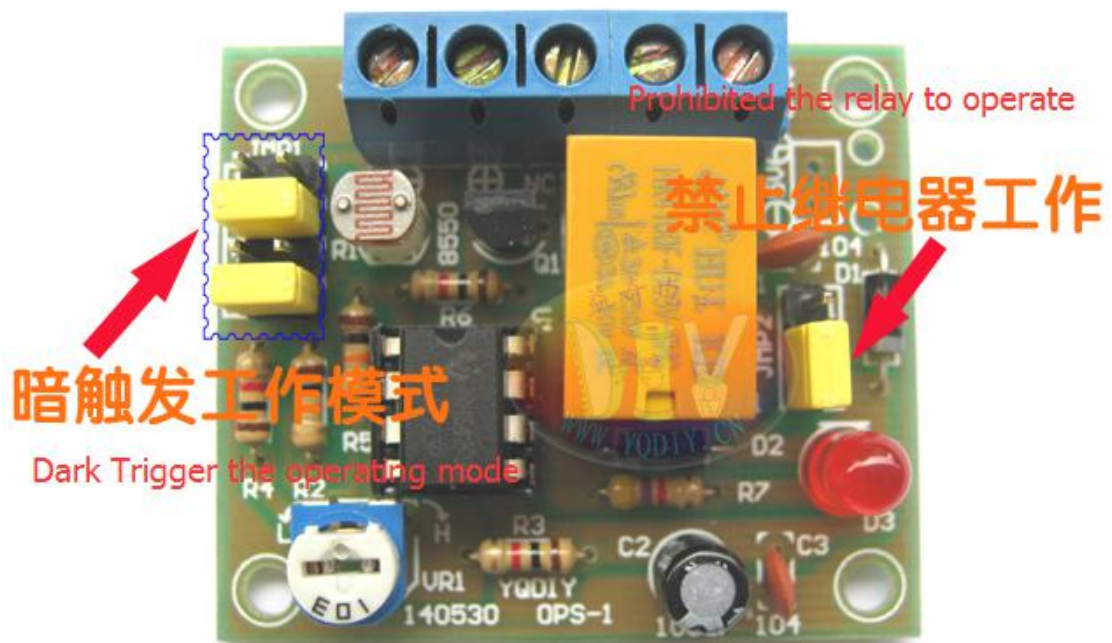








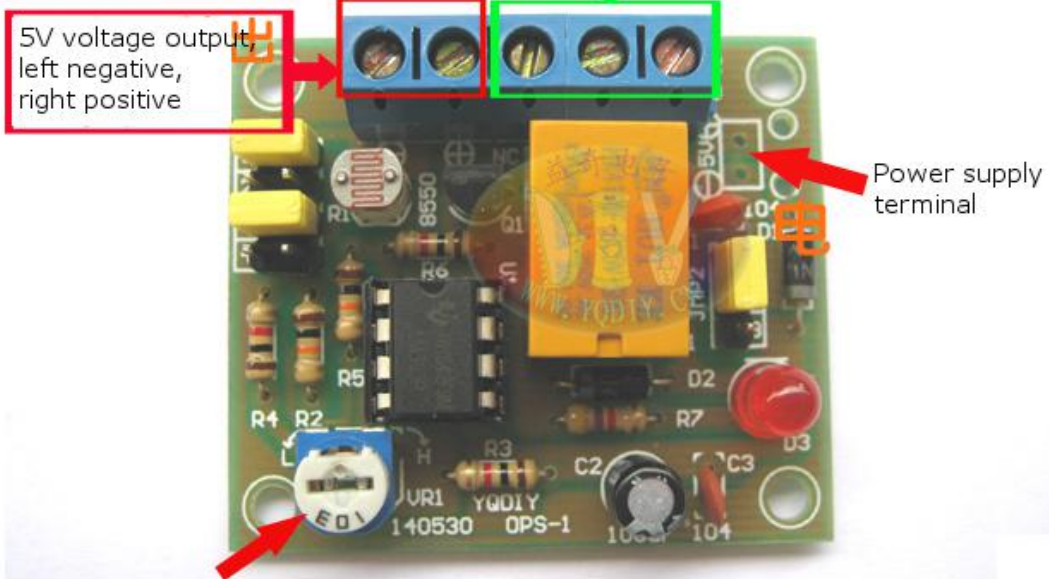
2. Dark trigger mode, disable the relay working setting.



OPS-1 light control switch terminal definition diagram:

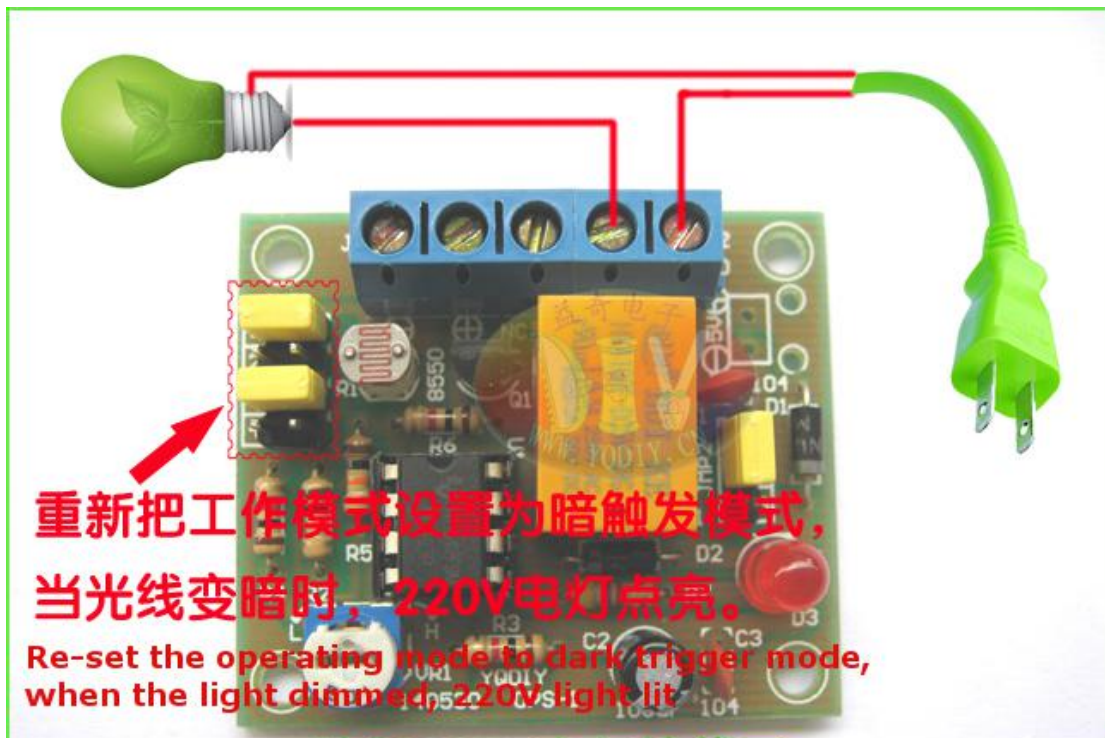


Passive switch output, can be connected 220V or less voltage. The middle is common terminal, the left side is the normally closed terminal, the right side if the open terminal.



L low, light sensor sensitivity adjustment, H high

## OPS-1 passive switch output application wiring diagram:



Control 220V electric lamp schematic