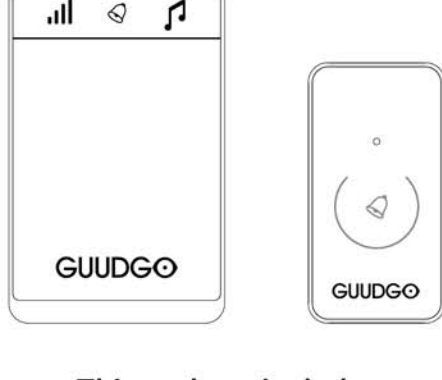


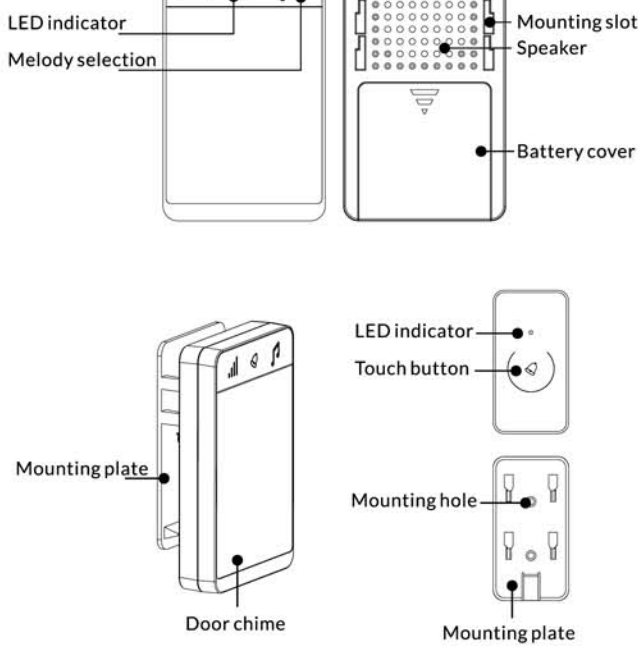
## Wireless Doorbell User Manual



### This package includes

- Wireless door chime
- Wireless touch button
- Hardware pack
- Battery

### Product Diagram

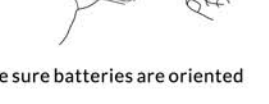


1

### Battery Installation

#### A. Touch button

1. Remove back cover by pushing in tab located at the bottom of the touch button unit with a small screwdriver.
2. Install an alkaline 23A 12V battery. Make sure battery is oriented properly.
3. Put the back cover in place.



#### B. Door Chime

1. Remove the battery cover.
2. Install 3 alkaline AA batteries. Make sure batteries are oriented properly.
3. Put the battery cover back in place.

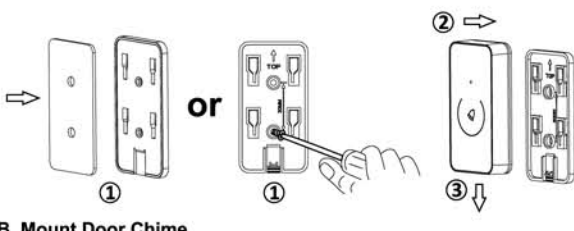
### Mounting

Before mounting the touch button and chime, temporarily position them where you want them to be mounted. Press the touch button to verify that the chime and touch button work properly. If the chime does not sound, see Troubleshooting on page 5.

#### A. Mount Touch Button

- Use either screws or adhesive tape to mount the touch button with the mounting plate.
- To mount with screws, remove the mounting plate from the touch button.
- Attach plate to door jamb or wall and start mounting. After that, install the touch button back into place.
- When attaching the plate using adhesive tape, make sure the surface of the door jamb or wall is clean and smooth.

2



#### B. Mount Door Chime

- Use either screws or adhesive tape to affix the mounting plate first.
- Using its mounting slots, attach the door chime onto the plate properly.
- When attaching the plate using adhesive tape, make sure the surface of the wall is clean and smooth.

### Mounting

1. Press the volume button to control the volume of the melody. There are 5 adjustable volume levels: higher, high, medium, low, and mute.
2. Press the melody selection button to select the melody you like. There are 52 different melodies with 16 chords.
3. Reset function: Press and hold the music button for 3 seconds. The music will be reset to the default selection. This doorbell comes with a memory function in case of unexpected power down.

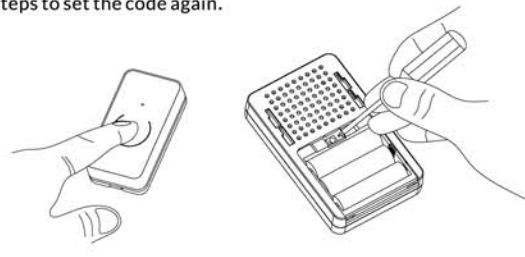
### Code Learning

This unit comes with a code learning function, which allows you to expand your unit with more touch buttons or door chimes. Follow the instructions below for the code learning application.

1. Remove the battery cover of the door chime.

3

2. Use a small screwdriver or other tool to press and hold the button close to the battery compartment, then press the touch button.
3. Release both buttons after a melody is heard-the code learning application was successful. If nothing happens, repeat the above steps to set the code again.



### Technical Data

- Touch button battery: 23A 12V (included)
- Chime batteries: 3 x AA 1.5V (included)
- Volume: 90-110dB
- Range: Up to 150m (open space)
- Number of melodies: 52
- Touch button IP rating: Waterproof IP44

### Warning

1. Please do not dismantle the unit and repair it yourself. This is to avoid any breakdown of components or create a hazard.
2. Please use high-quality alkaline batteries.
3. Please keep the unit away from objects or areas with electromagnetic fields or places that are moist or high-temperature.
4. The effective range of the unit depends on location, temperature, and battery condition.

4

### Troubleshooting

Problems	Solutions
1. Chime does not sound	<ul style="list-style-type: none"> <li>• Check orientation of touch button battery</li> <li>• Check orientation of chime battery</li> <li>• Check the battery; replace with new batteries if necessary</li> <li>• Make sure the touch button and chime codes are the same. If not, follow the code learning instructions to reset the code</li> </ul>
2. Batteries seem OK, but the chime does not work when installed	<ul style="list-style-type: none"> <li>• Do not mount the chime or touch button on metal or near metal studs. This reduces the transmitting range</li> <li>• Check the battery; replace with new batteries if necessary</li> <li>• Try placing the chime at different locations and closer to the touch button. You can also try to position the chime at a different angle to increase the range</li> </ul>
3. Touch button does not work or the LED indicator on touch button stays on	<ul style="list-style-type: none"> <li>• Re-install the battery in touch button</li> </ul>

5