

## CONTENT

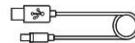
- Package List.....1
- Disclaimer and Warning.....2
- Safety Operation Guidelines.....4
- USB Connection.....7
- Mounting Camera, Checking Balance.....9
- Panel Introduction.....10
- Operating Mode.....11
- Changing Orientation.....12
- App Operation, and Bluetooth Connection.....13
- Product Specification.....14
- Warranty Card..... 15

## PACKAGE LIST

The product should be packed with following items (including this user manual), If you are missing any items or components, please contact your dealer immediately!



GIMBAL STABILIZER ×1



MICRO USB CABLE ×1



User Manual ×1

## DISCLAIMER AND WARING

Thank you for purchasing our Stabilizer. Before you start PLEASE read this manual and become familiar with Stabilizer's components and operating modes to ensure proper operation. The information contains herein affects your safety and your legal rights and responsibility. Failure to read and follow the instructions and warnings may result in serious injury to you or damage to your device or property.

By using this product, you hereby signify that you have read this document carefully and that you understand and agree to abide by the terms and conditions herein. You agree that you are solely responsible for you conduct while using this product and for any consequences thereof. You agree to use this product only for purposes that are proper and in accordance with all terms, precautions, practices, policies and guidelines our company has made and may make available.

Our company accepts no liability for damage, injury or any legal responsibility incurred directly or indirectly from the use of this product. The user shall observe safe and lawful practices including, but not limited to those set forth herein.

## GLOSSARY

The following terms are used throughout the product literature to indicate various levels of potential harm when operating this product.

- **Warning:** Procedures, which if not properly followed, may incur property damage, grave accident, or serious injury.
- **CAUTION:** Procedures, which if not properly followed, may incur property damage and serious injury.
- **NOTICE:** Procedures, which if not properly followed, may incur property damage or minor injury.

## DISCLAIMER AND WARING

### WARNING:

Read the ENTIRE User guide to become familiar with the features of our Stabilizer before operating. Failure to operate the product correctly can result in damage to the product or personal property, and cause serious injury. This is a sophisticated product. It must be operated with caution and common sense and requires some basic mechanical ability. In-correct Use of product in a safe and responsible manner could result in injury or damage to the product or other property. This product is not intended for use by children without direct adult supervision. DO NOT use with incompatible components or in any way otherwise as mentioned or instructed in the product documents provided by our company. This Safety Guidelines herein contain instructions for safety, operation and maintenance. It is essential to read and follow all of the instructions and warnings in the user manual, prior to assembly, setup or use, in order to operate the product correctly and avoid damage or serious injury.

## SAFETY OPERATION GUIDELINE

The Stabilizer should be used in temperatures from 0°C to 40°C.  
Use of the battery in environments above 40°C can lead to a fire or explosion. Use of battery below 0°C can lead to serious damage.

### ■ CHARGING THE BATTERY

1. Always use our company approved charger for charging. Our company takes no responsibility if the battery is charged using Non-Our company charger.
2. Do not put the stabilizer near flammable materials or on flammable surfaces (such as carpet or wood). Never leave the battery unattended during charging to prevent any accident.
3. Do not charge the battery immediately after use, when the Stabilizer temperature may be too high. Do not charge the battery until it cools down to near room temperature. Charging the battery with its temperature over 40°C or lower than 5°C may lead to leakage, overheating, or battery damage.
4. Examine the charger and cable before use; make sure there is no damage to the enclosure, cord, plug, or other parts. Never use a damaged charger. Do not clean the charger with denature alcohol or other flammable solvents. Never use a damaged charger.
5. The Intelligent Battery will stop charging when it is full. Disconnect the batteries from the charger when fully charged.

### ■ STORAGE

1. DO NOT leave the Stabilizer near heat sources such as a furnace or heater, or expose inside of a vehicle on hot days.
2. Store Stabilizer in dry environment, and never store the Stabilizer in any environment with temperature of over 60°C.
3. Do not leave the Stabilizer unused for too long after it has been completely discharged to prevent over-discharge of battery which may result in battery damage and permanent damage.

### ■ TRAVEL NOTICE

Discharge the battery power to 5% or lower before carrying the battery on an air flight.

## SAFETY OPERATION GUIDELINE

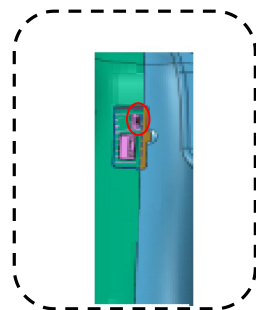
### ■ CAUTION:

1. The Stabilizers a high -precision control device, damaged may be caused to stabilizer if it is dropped or subject to external force, and this many result in malfunction.
2. Make sure the rotation of Stabilizer axes is not blocked by external force when the stabilizer is power on.
3. 3. The Stabilizer is not waterproof or water-resistant. Prevent contacts of any kind of liquid or clear with.  
Prevent contacts of any kind of liquid or clear with.  
It is recommended to use dry cloth for cleaning.
4. Protect the Stabilizer from dust and sand during use.

### ■ NOTICE

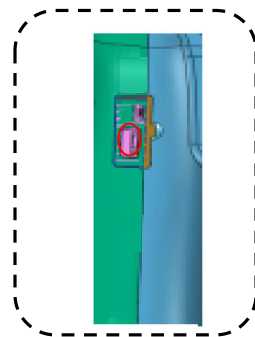
1. Hold the Stabilizer's Handle still in when it is powering up to ensure it starts up successfully.
2. Make sure the batteries are fully charged before each time of use.
3. Discharge the battery to 40%~65% if it will NOT be used for over 10 days. This can greatly extend the battery life.
4. Charge and Discharge the battery completely once every 3 months to keep it active.

## ② USB CONNECTION



### IN-USE CHARGING

See the Micro USB Port Mark 7  
It is to a power source SUCH AS a power pack (not include) to extend run-times.



### MOBILE CHARGING

The USB port at the bottom of the stabilizer handle can be used for charging of your Smartphone while in use on the Stabilizer.

■An L-shape charging connector is required when the Smartphone is mounted horizontally on the mobile clamp.

### ③ MOUNTING CAMERA



Place Smartphone to mounting clip, as show. Slide the Smartphone all the way to right until it touches Tilt Motor.



**WARNING!**  
ALWAYS MOUNT YOUR CAMERA PRIOR TO POWERING ON.  
FAILURE TO DO CAN DAMAGE THE UNIT!

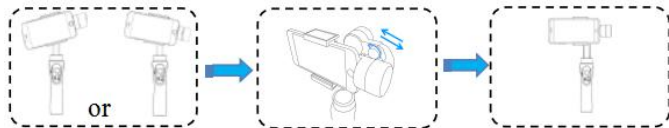
### ④ CHECKING BALANCE

If the Smartphone does not stay leveled when mounted, please do as following:

**Step 1:** Loosen the Roll balance Knob.

**Step 2:** Make small Adjustment t by sliding the horizontal arm, Until the mobile intersects stabilizer with a 70-100 degree.

**Step 3:** Tighten the Thumb Screw after the phone is well balanced in level to ensure normal operations.



**NOTES:** Proper adjustment of balance ensures better power saving during operation.

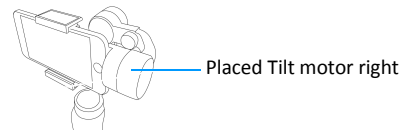
The stabilizer may still function well when the gravity center is not properly configured; however, it may lead to more power consumption on the motors, and can greatly affect the torque output.




### ⑤ OPERATING

#### To Power On

Step 1: place Tilt Motor on the right: Power on function well operated

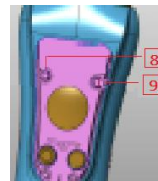
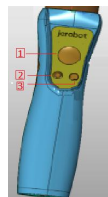


**WARNING:**

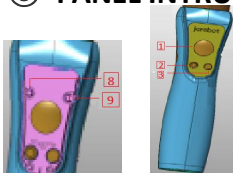
 Tilt Motor place on the left side, Stabilizer cannot power on

Step 2: Press & Hold the Power/Shooting button for 3-4 seconds until the Status Indicator light flashes blue, and then turns ON Green finally.

2. Power ON/OFF + Shooting Button



## ⑥ PANEL INTRODUCTION



- 8. Power Indicator
- 9. Status Indicator
- 1. Joystick
- 2. Power ON/OFF
- 3. MODE button

### 8. Power Indicator Light

Blue Light is always on - enough remaining battery power  
Power light will rapidly flash - low on charge

### 9. Status Indicator Light

operation, that the control unit goes through to process an instruction  
2. Green Light - Stabilizer has gone into working condition.  
3. Red Light:  
Red Light is always on - low on charge-shut down.  
Red Light is blinking rapidly - Stabilizer overload-shut down.  
4. Yellow Light - error - shut down - restart.

### 4. Shooting

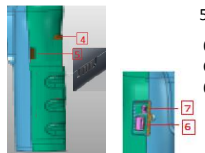
After Bluetooth Connected between the mobile and stabilizer, use SHOOT button to take photos/video

### 5. Zoom Control (In APP control only)

Use the zoom slider to control UP (Zoom In) and Down (Zoom Out);

### 7. Micro USB Charging

- a. Connect the micro USB port to portable power source such as USB power bank to extend run-times.
- b. Use a cable for Charging stabilizer when no power.



- 4. Shooting Button
- 5. Zoom Control
- 6. Micro USB Charging Port
- 7. USB 2.0 Port

### 1. Joystick

Control movement UP/DOWN (Tilt Motor) and LEFT/RIGHT (Pan Motor)

**\*The Joystick can be used in All 3 Modes**

### 2. Power ON/OFF and Shooting Button

**To Power on:** Press & Hold the Power/Shooting button for 3-4 seconds until the Status Indicator light flashes blue, and then turns ON Green finally.

**To Power off:** Press and hold the POWER+SHOOT Button for 3 seconds

**Return (Selfie Position) Function**  
Double click the Power button to bring the camera to its original position.

### 3. MODE Button

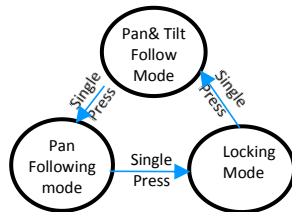
Single Press to cycle through the 3 Modes that you set.

### 6. USB 2.0 Port

The USB 2.0 port can be used for charging of your Smartphone while in use on the Stabilizer.

10

## ⑦ OPERATING MODES

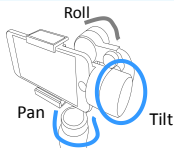


Please make notes of each motor and operating Mode details (showing on this page), as stabilizer comes pre-program with 3 different mode

### SWITCHING STABILIZER MODES

Press the Power Button, The stabilizer enters **Pan & Tilt Follow Mode** each time when powered on. (Default Mode)  
Single Click Mode button to Switch into **Pan Following Mode**  
Single Click the MODE button to enter into **Locking Mode**.

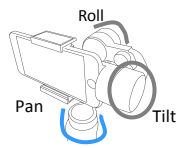
### Pan & Tilt Follow Mode



Roll axis is locked.  
The camera pans (Left/right) and tilts (Up/Down) are following the movement of camera.

Push Joystick up and down to control the tilt of camera, use joystick left and right to manual pan left/right

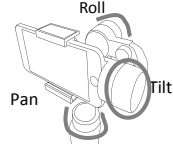
### Pan Following Mode



Tilt & Roll are locked.  
Pan axis rotates (Left/Right) smoothly with turn of wrist.

Push Joystick up and down to control the tilt of camera, use joystick left and right to manual pan left/right

### Lock Mode



Pan, Tilt, Roll axis are all locked.  
The camera keeps still and stable, which means the camera cannot follow the handle's movement.

Push Joystick up and down to control the tilt of camera, use joystick left and right to manual pan left/right

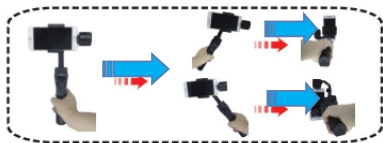
11

## ⑧ CHANGE ORIENTATION

The Stabilizer comes with 2 different Way for Change Orientation

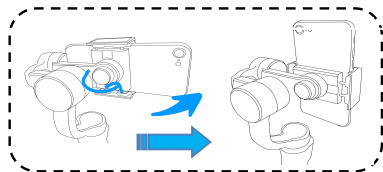
### Switching From Horizontal

Keep the phone facing yourself and rotate the Stabilizer handle over 70 degrees in counterclockwise direction, Stabilizer will enter vertical shooting Mode. (Phone camera upward)  
Keep the phone facing yourself and rotate the Stabilizer handle over 70 degrees in clockwise direction, Stabilizer enter vertical shooting. (Phone camera upward)



### Switching Mount

Step 1: Loosen the Smartphone Clamp Thumbscrew and rotate the clamp to vertical direction  
Step 2: Place your Smartphone on the Clamp  
Step 3: Tighten the Clamp Thumbscrew to ensure normal operations.

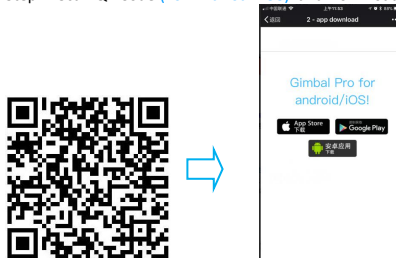


12

## ⑨ APP OPERATION & CONNECT TO BLUETOOTH

### Connect to Stabilizer APP

Step 1: Scan QR Code (For Android +IOS) and Download below APP for accessing.



Step 2: Power on the stabilizer

Step 3: Turn on Bluetooth in your Smartphone settings menu.

Step 4: Open the **Stabilizer APP**, and search for the 'Stabilizer' Bluetooth signal by selecting the Bluetooth icon in the pop-up screen

In the APP Menu, use the zoom slider to control UP(Zoom In) and Down(Zoom Out), and more function setting, such as Face Tracking, Smart Object Track, Panorama Shooting, Time-Lapse.

### Connect to Bluetooth

Step 1: Press the Power button for 3-4 seconds, stabilizer will power on.

Step 2: Turn on Bluetooth in your Smartphone settings menu.

Step 3: After Bluetooth Connected between Smartphone and stabilizer, you can start taking photo/Record video

13

## ⑩ PRODUCT SPECIFICATIONS

	Min.	Standard	Max.	Remarks
Input Vol.	3.4V	3.7V	4.2V	
Operation Current	150mA	1500mA	3000mA	
Operation Temperature	0°C		40°C	
Operation Time		12h		Well balanced with camera mounted
Weight		423g		
Pitch Angle Range		325°		
Roll Angle Range		325°		
Pan Angle Range		330°		
Compatible Models	Smartphone with sizes under 6.0 Gopro3/4/5/6			
Controllable Pitch Angle	-155°		+155°	
Controllable Roll Angle	-30°		+30°	
Controllable Pan Angle	-155°		+155°	
Payload		75~200g		
Charging Time		3H		
Charging Voltage		5V		
Charging Current		1A		
Power Output Voltage		5V		
Power Output Current		1A		

14

## WARRANTY CARD

### Warranty Period

1. The warranty period is 1 year from the original date of purchase. During the warranty period, under normal use, our company will at its option, repair and/or replace parts which determined by defective situation
2. Warranty this product against effects in material or workmanship when it belong Normal consumer usage and conditions for the time periods.

### Warranty does not cover:

1. Products subjected to unauthorized Maintenance, misuse, collision, neglect, mishandling, soaking, accident, and unauthorized alteration.
2. Incorrect use of product: Removing serial number labels/tags
3. Products whose warranty has expired.
4. Products damaged due to force majeure, such as fire, flood, lighting, etc.

### Warranty Claim Procedure

If failure or any problem occurs to your product after purchase, please contact a local agent for assistant.

### Latest Information

For the latest user manuals, tutorial video, firmware and calibration instruction, please visit your dealer web page.

Many Stabilizer performances can be solved with a simple calibration sequences.

15



## WARRANTY CARD

### Custom Information

Customer Name:

Contact No:

Address:

### Sales Information

Sales Date: :

Product Serials No:

Dealer:

Contact Tel No:

### #1 Maintenance Record

Service Date:

Signature of Repairman:



Cause of Problem: :

Service Result:  Solved

Unsolved

Refunded/Replaced

## Certificate of Quality

This product is confirmed to meet quality standards and Permitted for sales after strict inspection.

QC inspector: \_\_\_\_\_