

Tools you need.

- ①Iron (30W)
- ②Solder wire
- ③Multimeter
- ④Tweezers
- ⑤Wire cutters

Precautions::

- ①Check part values & quantities against part list
- ②Always meter resistor values before soldering
- ③Understand all part polarities and orientations

ETI-60 One minute electronic timerkit instructions

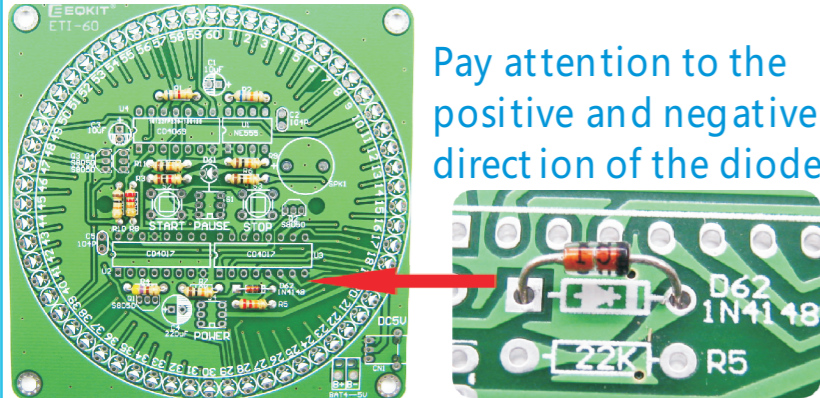
Rev. 1.0

April 4, 2018

Produced by YiQi

1. Install RES and Diode:

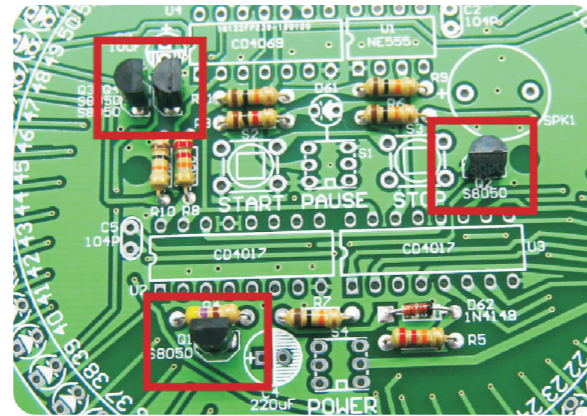
Install the resistance on the circuit board by referring to the shipping list



Pay attention to the positive and negative direction of the diode

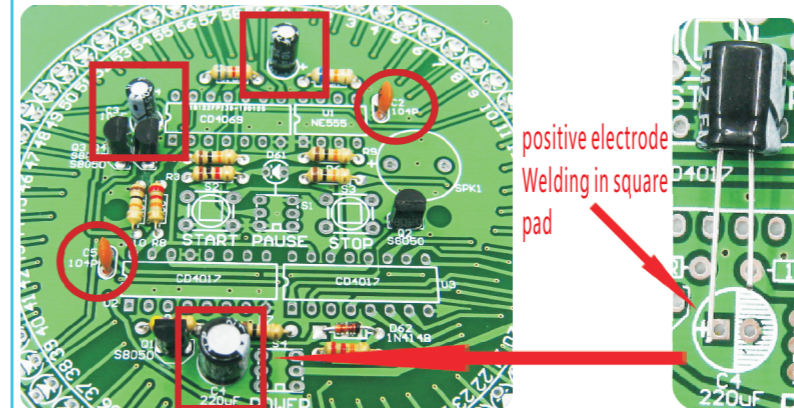
2. Install Triode:

Install four S8050 triode tubes to Q1-Q4



3. Install Ceramic capacitance and electrolytic capacitor:

C2、C5=104pF Ceramic capacitance, C4=220uF, C1、C3=10uF electrolytic capacitor



positive electrode
Welding in square
pad

Warning:

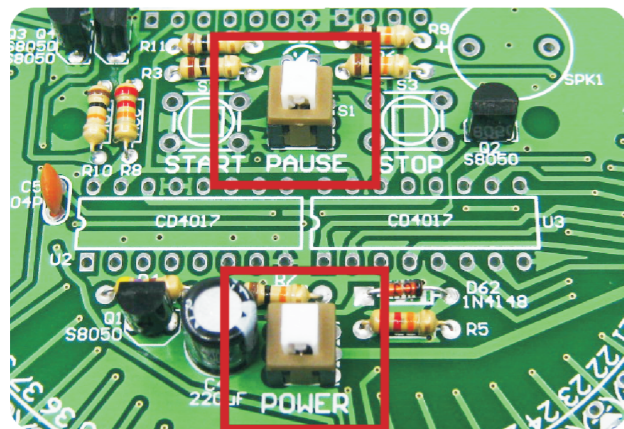
The long foot of the electrolytic capacitor is the positive pole.
Welding on the square pads on the circuit board



Long foot is a positive pole
Welding to square pad!

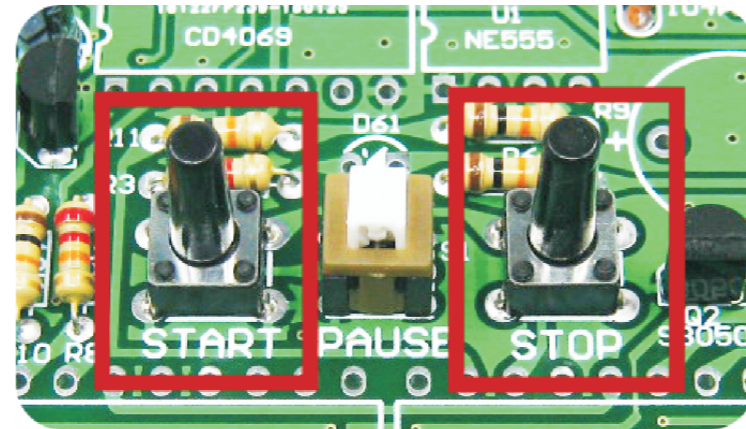
4. Install Self-locking switch:

Install Self-locking switch to S1 and S4
Pay attention to the direction of installation



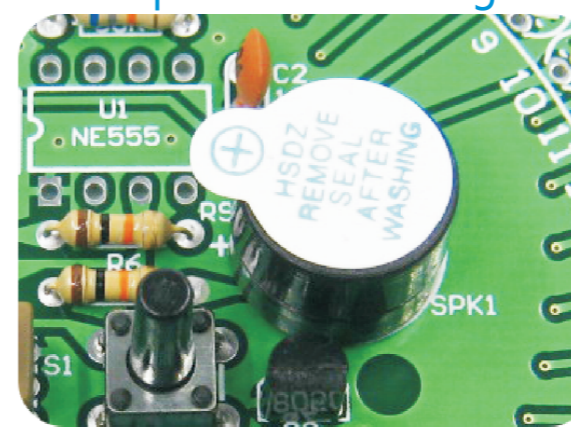
5. Install Button switch:

Install Button switch to S2 and S3



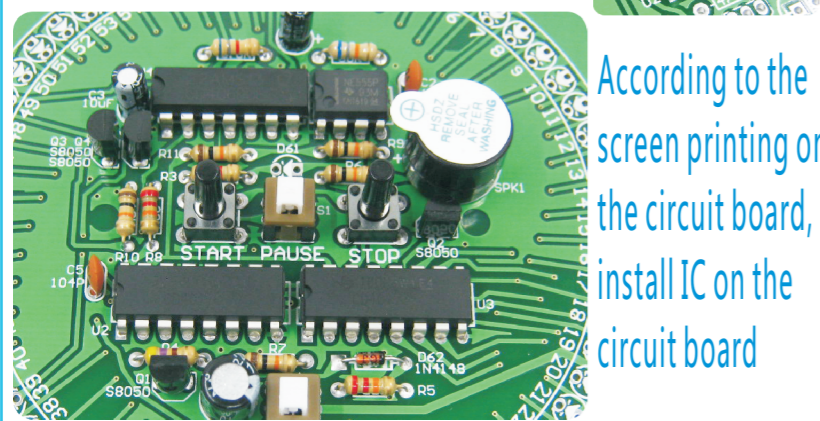
6. Install Buzzer

Pay attention to the distinction between positive and negative poles



7. Install I.C

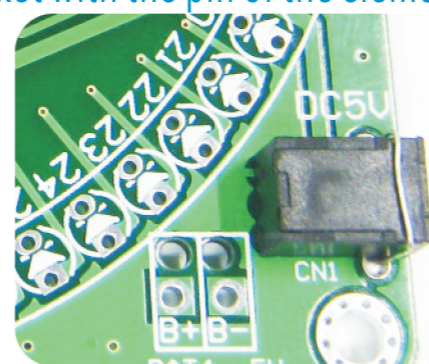
pay attention to the direction of IC
Gap corresponds to the gap of printed circuit board



According to the screen printing on the circuit board, install IC on the circuit board

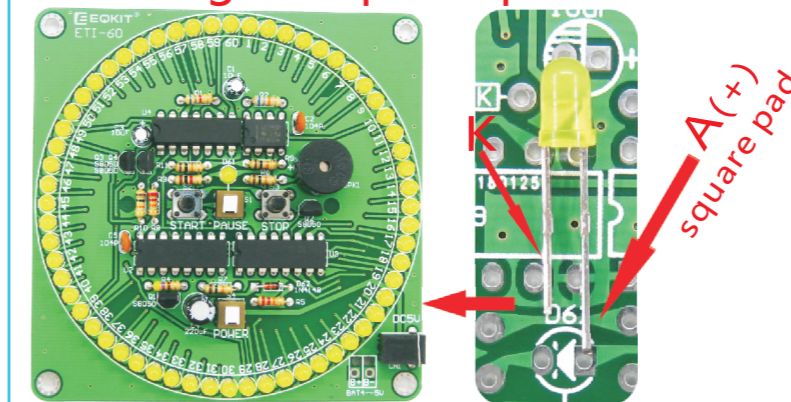
8. Install Power supply socket:

Refer to the diagram below, install the power socket on the CN1 of the circuit board.
Fix the socket with the pin of the element



9. Install LED

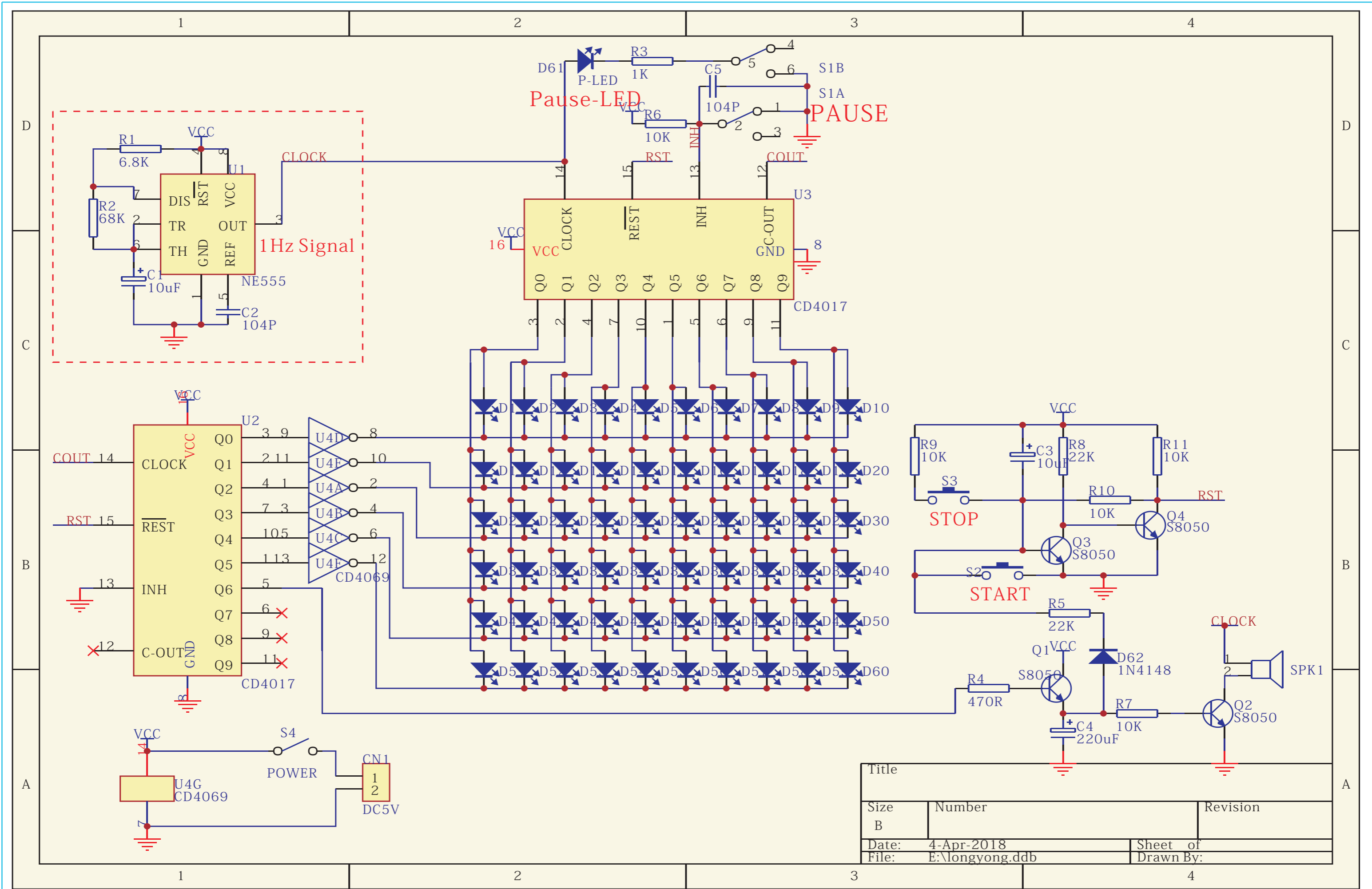
Long foot is a positive pole,
Welding to square pad!



A(+)
square pad

One minute electronic timer component list

NO.	Name	Parameter	QTY
R4	RES	470R	1
R3	RES	1K	1
R1	RES	6.8K	1
R6, R7, R9 R10, R11	RES	10K	5
R5, R8	RSE	22K	2
R2	RES	68K	1
C2, C5	CAP	104P	2
C1, C3	E. CAP	10uF	2
C4	E. CAP	220uF	1
D1—D61	LED	3mm	61+
U4	IC	CD4069	1
U2, U3	IC	CD4017	2
U5	IC	NE555	1
Q1—Q4	Triode	S8050	4
D62	Diode	1N4148	1
S2, S3	Button switch	6*6*9mm	2
S1, S4	Self-locking switch	6P	2
SPK1	Buzzer	5V 9*12	1
CN1	Power supply socket	DC3.5mm	1
—	PCB	ETI-60	1
—	USB power cable	100cm	1



Title		
Size	Number	Revision
Date:	4-Apr-2018	Sheet of
File:	E:\longyong.ddb	Drawn By: