

Eachine Pro DVR

Specification

1. size:41mm*32.9mm*9mm
2. weight:only 9.5g
3. Operating Voltage:DC 5V
4. Video Format:PAL/NTSC
5. Video Output Vize: VGA(640*480px) D1(720*480)HD (1280*480)
6. Light Frequency:50HZ/60HZ
7. Compress Format: MJPEG
8. Records Frame rate :30 Frames
9. Max support 32gTF Card

Packing list

1. DVR*1
2. Power supply, CAM cable*1
3. Video cable*1
4. Key lead wire*1
5. DIY powersupply, CAM cable*1
6. DIY video cable*1
7. Manual*1

Video recording

1. LED1 lights lit after power
2. Short press “▶” one time, The LED1 flashing it starting video recording, Image 1
3. Short press “▶” once again, The led1 stop flashing , stopped Video recording, Image 2
4. Long press the “☰” button to enter the recording sub menu option, see Figure 3



Image 1



Image 2



Image 3

Replay mode

1. Hold pressing “◀” for 3 seconds to enter into replay mode, Image 4.
2. please shorts press “◀” and “▶” to select the video, and press “☰” to play or pause, press “◀” to forward and “▶” to Rewind when playing. And hold pressing “☰” enter into Submenu, include “delete video” “volume set” hold pressing “☰” again to exiting submenu and replay mode, Image 5

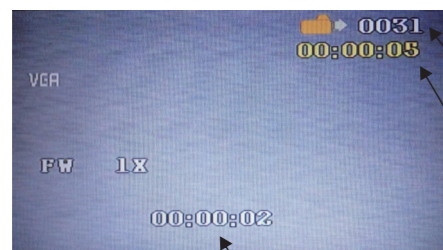


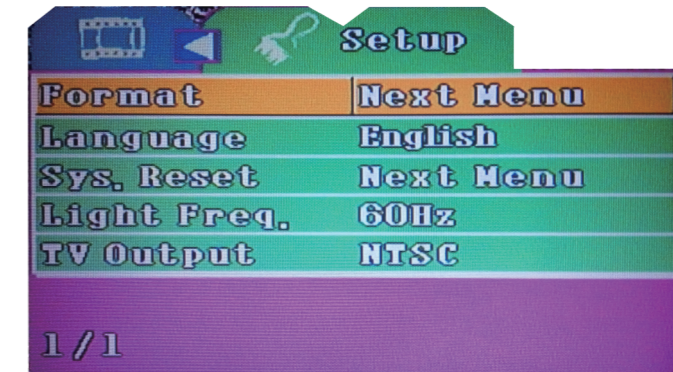
Image 4



Image 5

Main menu

1. Short press “▶” to enter into Main menu
2. Format the memory card
3. Interface language selection
4. Restore default settings
5. Display frequency
6. TV output system
7. press “◀” to prev “▶” to next, press “☰” to Enter
8. Hold pressing “☰” to exiting Main menu



Wiring diagram

